

# GEOTECHNICS – RANGE OF SERVICES



## Holistic study of structure and subsoil

Economically viable planning and construction requires sound knowledge of subsoil and ground water conditions. Only by taking a holistic view of all requirements for the structure and the subsoil, an investment project can be calculated optimally in terms of costs and deadlines right from the start.

The geotechnical engineering department is characterized by an interdisciplinary team. Utilizing the cooperation of experienced geotechnical engineers, engineering geologists, civil engineers and environmental experts, we are able to develop project-specific

concepts and solutions for our customers. Consulting engineers and appointed experts guarantee highest quality and professional competence.

**The GLU GmbH Freiberg is part of the GICON® Group, a corporate group of independent operating engineering service providers. The GICON® Group employs a total of about 500 employees and relies on the expertise from several thousand projects at home and abroad.**

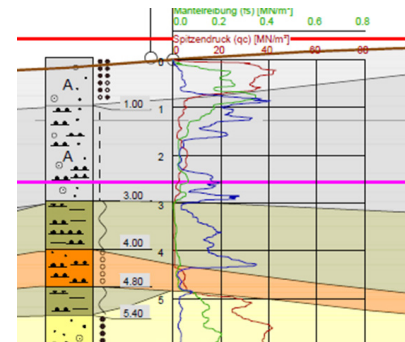
## Exploration, investigation, expert opinion and advice

- Conception, implementation and supervision of subsoil investigations, field and laboratory tests according to EUROCODE, ASTM or other international regulations
- Evaluation, interpretation and evaluation of field- and labtest results
- Geotechnical investigation report (EC 7-2), geotechnical report according to DIN 4020, geotechnical draft report acc. DIN EN 1997-2
- Special reports (hydrogeology, engineering geology, rock quality designation, stability evaluation of soil and rock slopes)
- Expert opinions, expert opinions on waste law and environmental analysis
- Management of complex drilling and testing campaigns
- Engineering-geological mapping & field survey

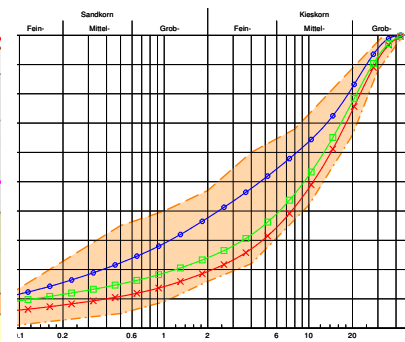
### 1 Subsoil investigation



### 2 Evaluation and interpretation of fieldtest results



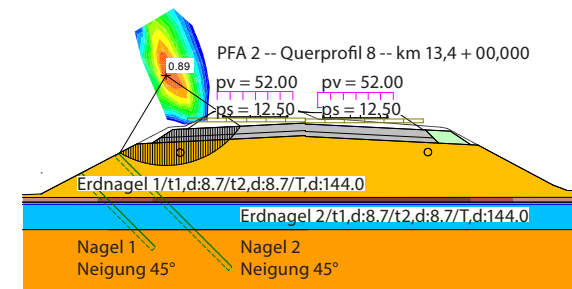
### 3 Documentation and evaluation of labtest results



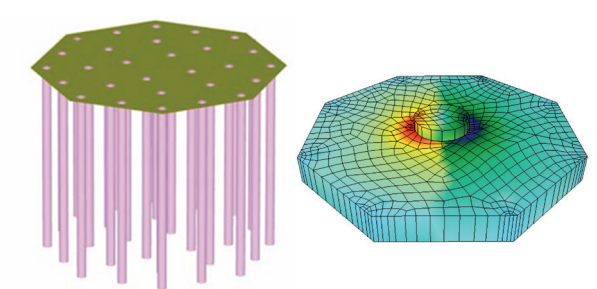
## Geotechnical calculations and technical planning

- Verification of stability and usability as well as structural design in earthwork, special foundation engineering and hydraulic engineering
- Planning of ground improvement measures for earthworks and foundation engineering (e.g. compaction, injection, geosynthetics, soil treatment with binding agents)
- Planning of structures, excavations and underpinnings
- Numerical calculations for groundwater retention

### 2D

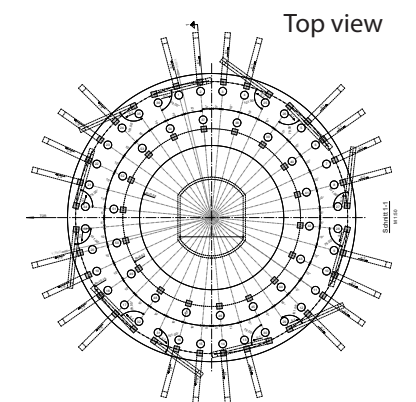


### 3D



## Geotechnical site management and quality assurance

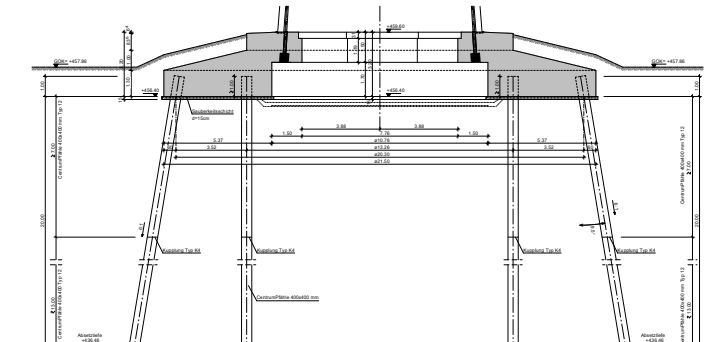
- Creation of quality assurance plans for site characterizations, earthworks, foundation engineering and hydraulic engineering
- In-house and third-party monitoring (field and laboratory tests)
- Metrological monitoring, monitoring and preservation of evidence
- Geotechnical and waste management related to construction and environmental law
- Supervision and site - control as owners` engineer



## Wind turbine foundation



### Cut





Geologische  
Landesuntersuchung  
GmbH Freiberg



#### GLU Geologische Landesuntersuchung GmbH Freiberg

##### Headquarters Freiberg

Halsbrücker Str. 34 | 09599 Freiberg | Germany

Telephone +49 3731 20782 - 10 | Fax +49 3731 20782 - 69 | kontakt@glu-freiberg.de

##### Branch Berlin

Rhinstr. 137a | 10315 Berlin | Germany

Telephone +49 30 5497997 - 510 | Fax +49 30 5497997 - 519 | kontakt@glu-freiberg.de

##### Branch Dresden

Tiergartenstr. 48 | 01219 Dresden | Germany

Telephone +49 351 47878 - 9801 | Fax +49 47878 - 78 | kontakt@glu-freiberg.de

[www.glu-freiberg.de](http://www.glu-freiberg.de)

Member of the

**GICON**<sup>®</sup>

Group

## Geotechnics – range of services